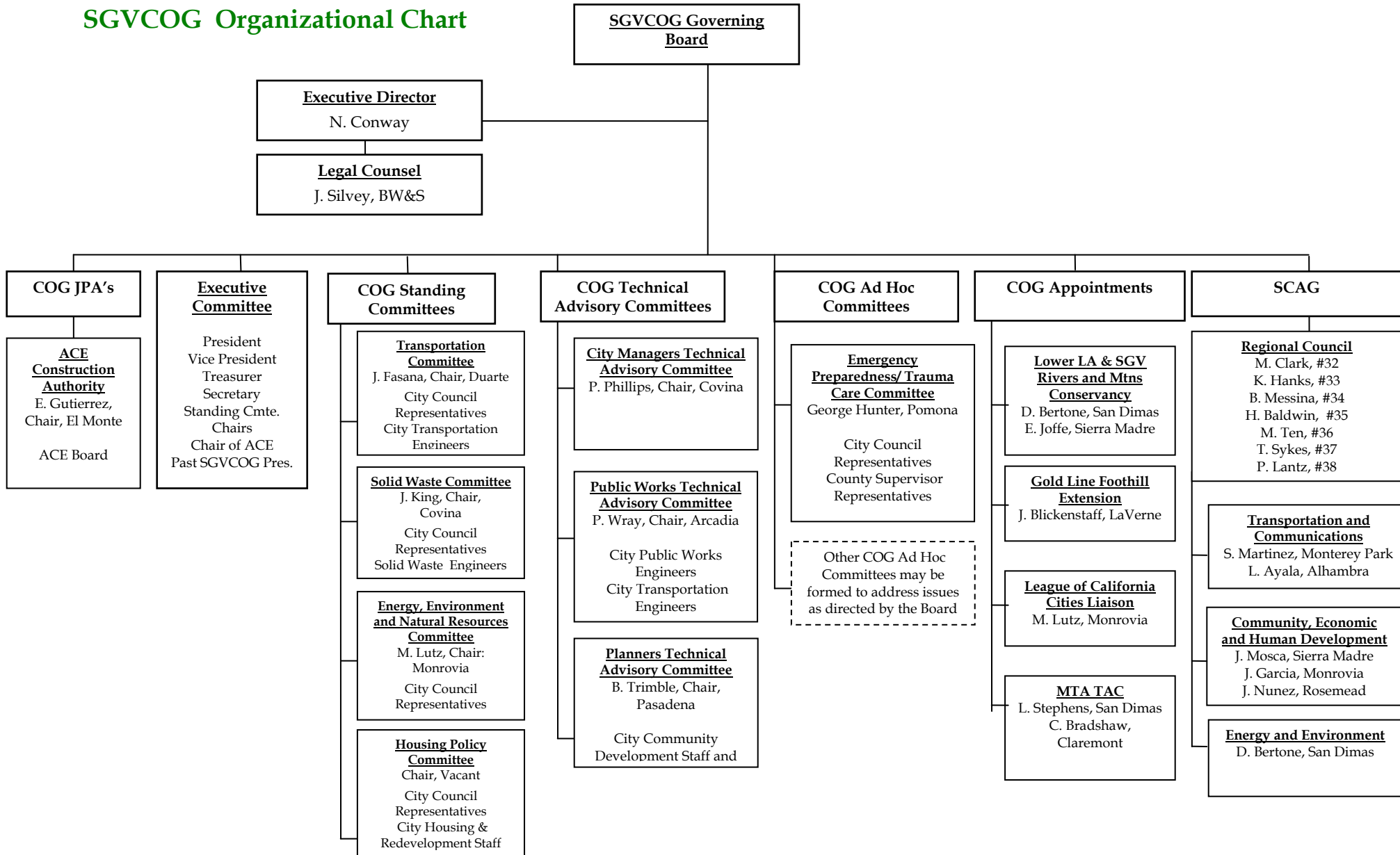


# SGVCOG Organizational Chart



**SGVCOG Governing Board**

**Executive Director**  
N. Conway

**Legal Counsel**  
J. Silvey, BW&S

**COG JPA's**

**ACE Construction Authority**  
E. Gutierrez,  
Chair, El Monte  
  
ACE Board

**Executive Committee**  
  
President  
Vice President  
Treasurer  
Secretary  
Standing Cmte. Chairs  
Chair of ACE  
Past SGVCOG Pres.

**COG Standing Committees**

**Transportation Committee**  
J. Fasana, Chair, Duarte  
City Council  
Representatives  
City Transportation  
Engineers

**Solid Waste Committee**  
J. King, Chair,  
Covina  
City Council  
Representatives  
Solid Waste Engineers

**Energy, Environment  
and Natural Resources  
Committee**  
M. Lutz, Chair:  
Monrovia  
City Council  
Representatives

**Housing Policy  
Committee**  
Chair, Vacant  
City Council  
Representatives  
City Housing &  
Redevelopment Staff

**COG Technical Advisory Committees**

**City Managers Technical  
Advisory Committee**  
P. Phillips, Chair, Covina

**Public Works Technical  
Advisory Committee**  
P. Wray, Chair, Arcadia  
  
City Public Works  
Engineers  
City Transportation  
Engineers

**Planners Technical  
Advisory Committee**  
B. Trimble, Chair,  
Pasadena  
  
City Community  
Development Staff and

**COG Ad Hoc Committees**

**Emergency  
Preparedness/ Trauma  
Care Committee**  
George Hunter, Pomona  
  
City Council  
Representatives  
County Supervisor  
Representatives

Other COG Ad Hoc  
Committees may be  
formed to address issues  
as directed by the Board

**COG Appointments**

**Lower LA & SGV  
Rivers and Mtns  
Conservancy**  
D. Bertone, San Dimas  
E. Joffe, Sierra Madre

**Gold Line Foothill  
Extension**  
J. Blickenstaff, LaVerne

**League of California  
Cities Liaison**  
M. Lutz, Monrovia

**MTA TAC**  
L. Stephens, San Dimas  
C. Bradshaw,  
Claremont

**SCAG**

**Regional Council**  
M. Clark, #32  
K. Hanks, #33  
B. Messina, #34  
H. Baldwin, #35  
M. Ten, #36  
T. Sykes, #37  
P. Lantz, #38

**Transportation and  
Communications**  
S. Martinez, Monterey Park  
L. Ayala, Alhambra

**Community, Economic  
and Human Development**  
J. Mosca, Sierra Madre  
J. Garcia, Monrovia  
J. Nunez, Rosemead

**Energy and Environment**  
D. Bertone, San Dimas